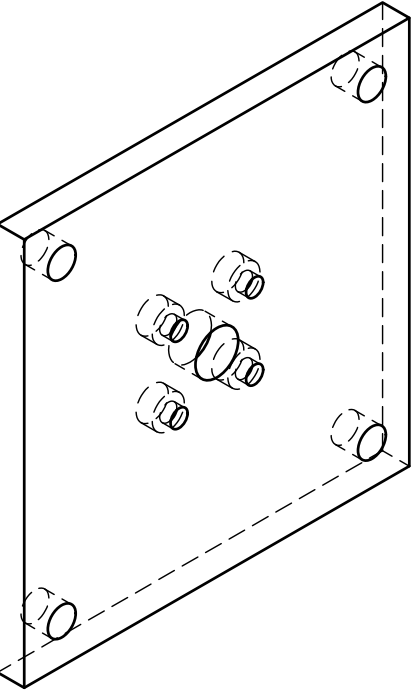
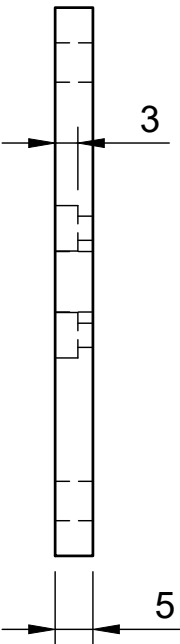
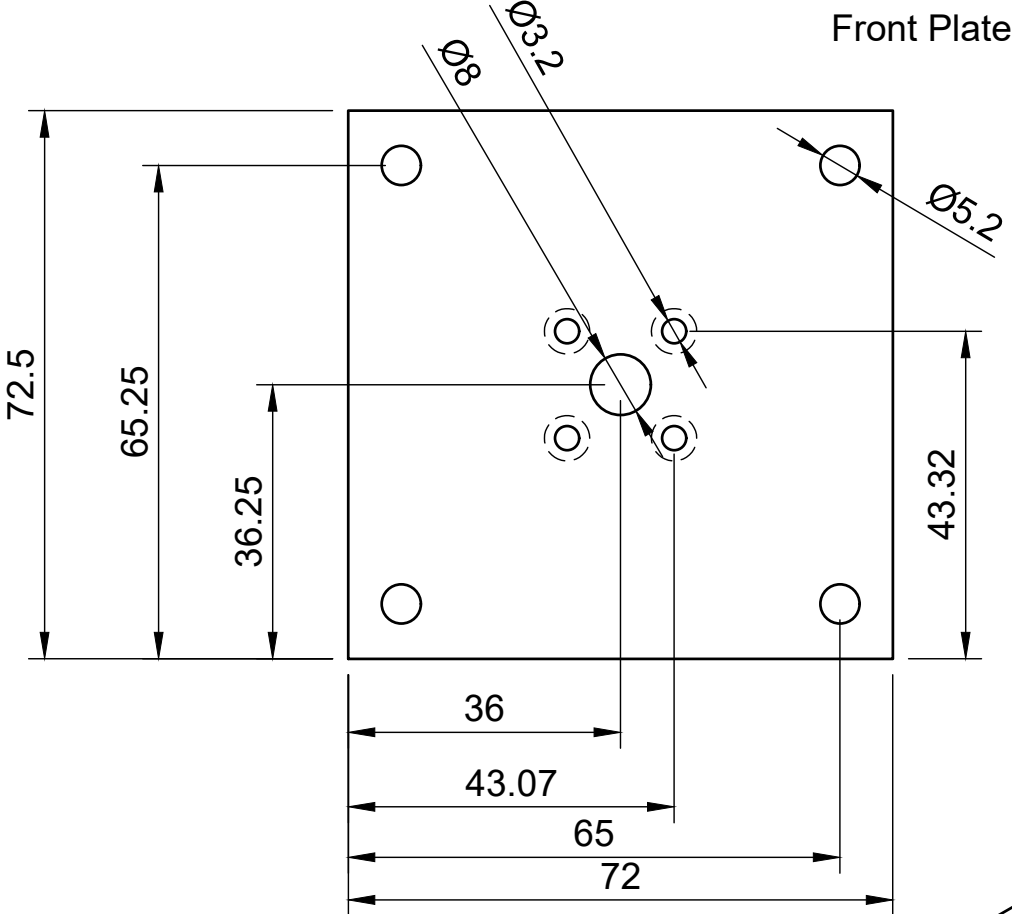
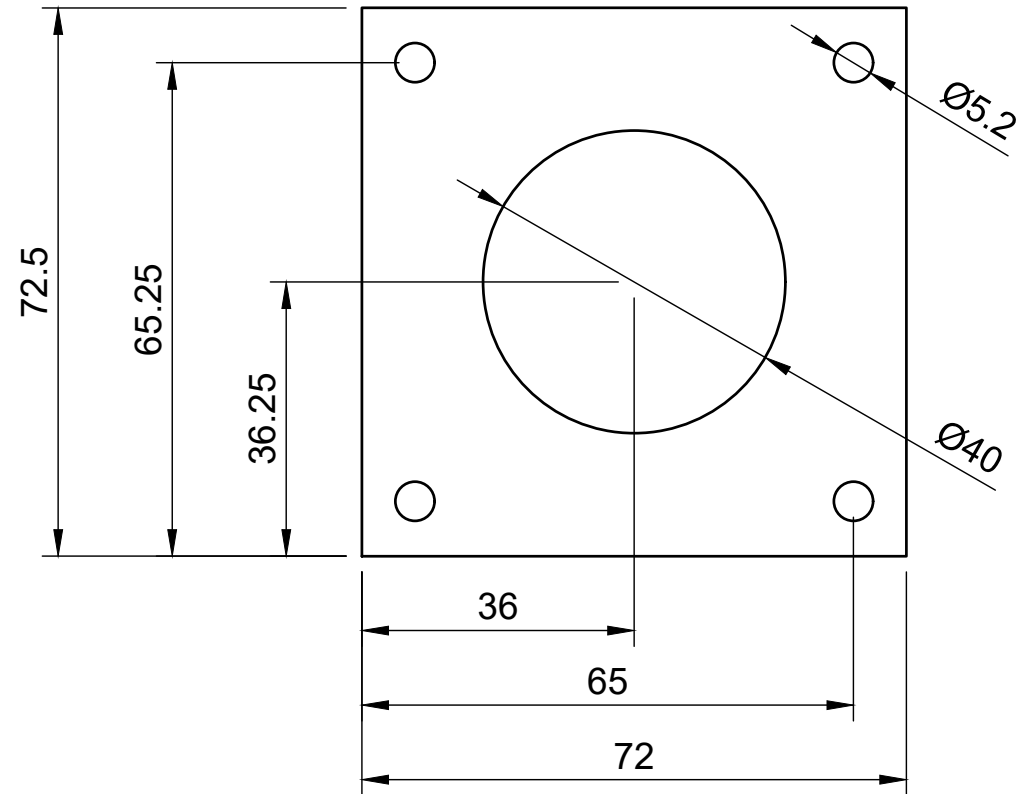


Front Plate



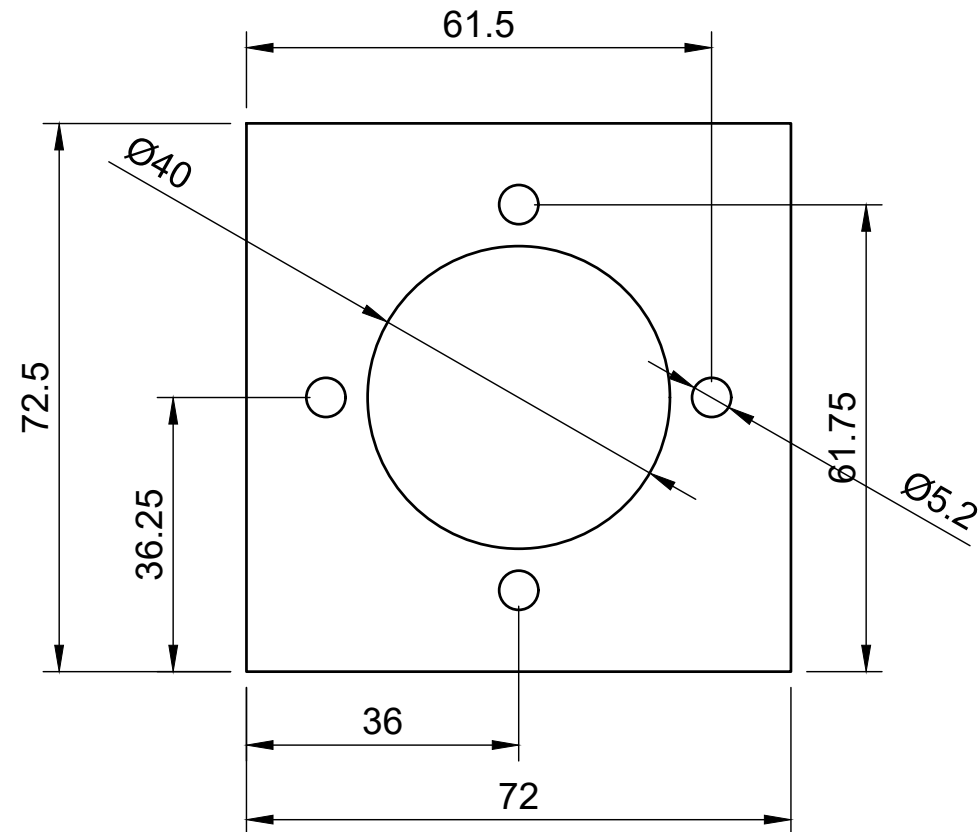
Steel 5mm
Qty = 2 (1 per
solenoid)

Middle Plate



Steel 5mm
Qty = 2(1 per solenoid)

Back Plate



steel 5mm
Qty = 2(1 per solenoid)

Side plate

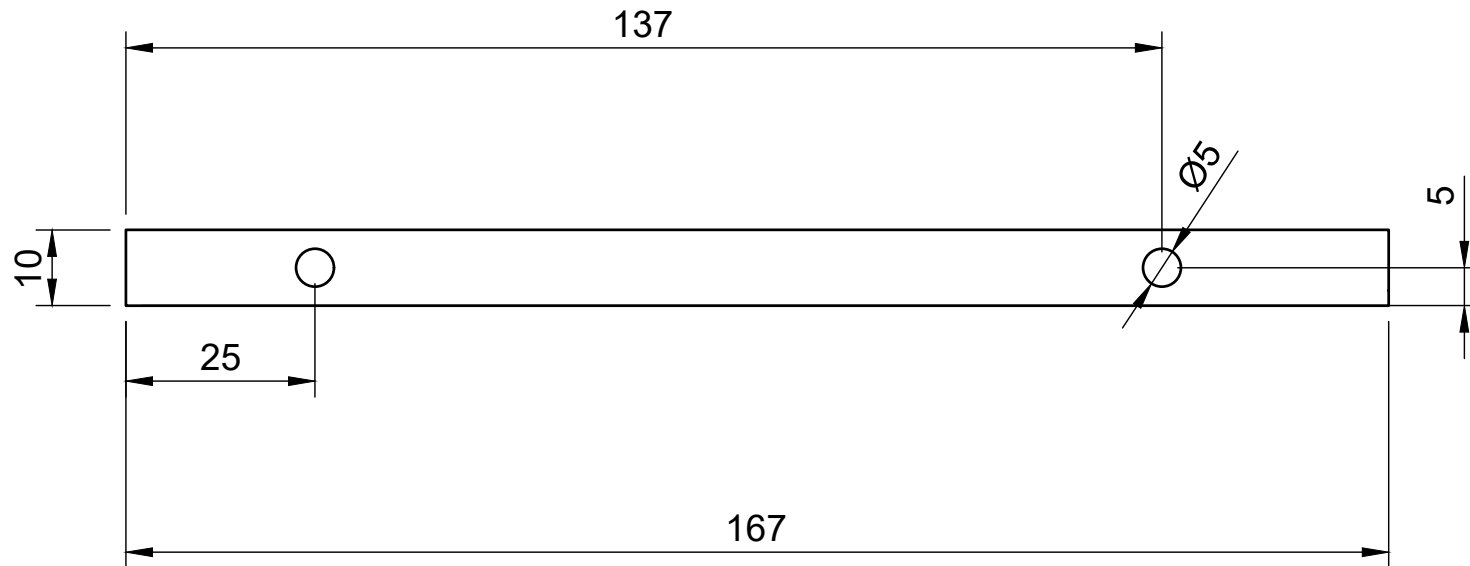
167

72.5

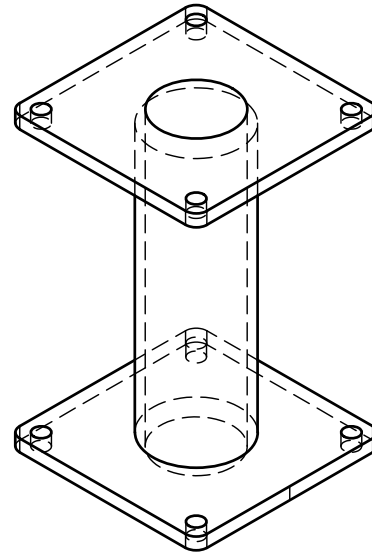
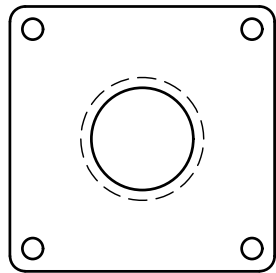
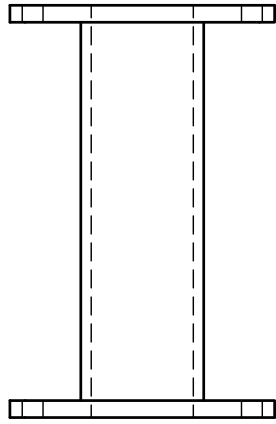
Steel 2 mm

Qty = 4(2 per solenoid)

Solenoid mounting plate



Steel 2mm
Qty = 4(2 per solenoid)



SOLENOID COIL - PLA

